

For Sale

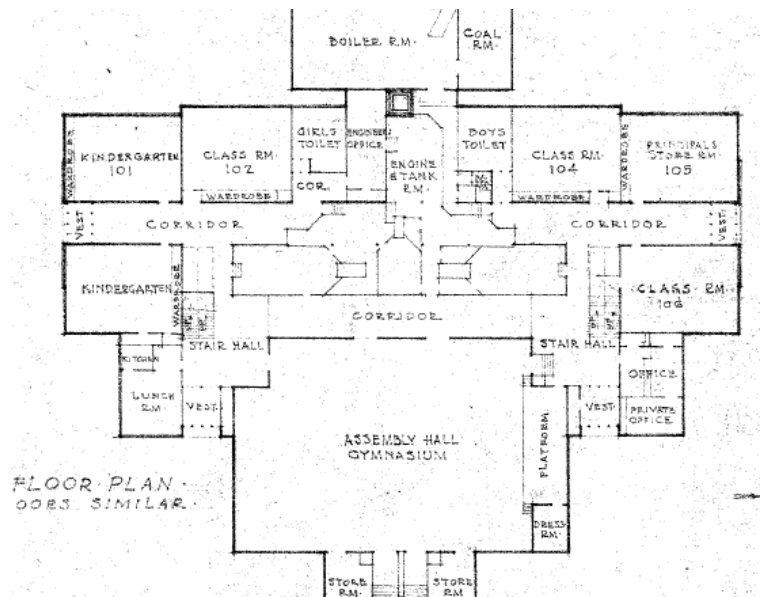
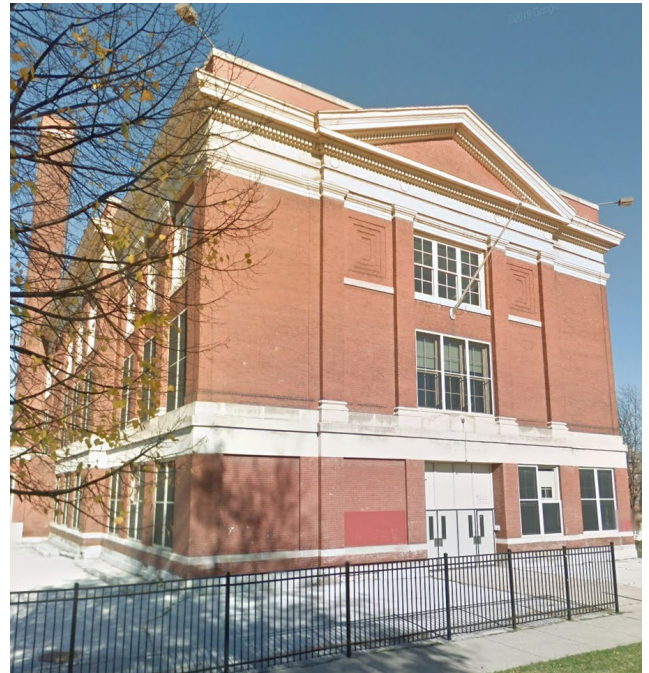
CBRE

10401-25 S. Perry Chicago, IL

Former Kohn Main School

Property Information

- Building SF: 36,176 SF
- Land SF: 71,383 SF
- PINS: 25-16-208-001-0000 (part of)
- Zoning: RS-3
- Neighborhood: Roseland
- Ward 9 / Alderman Anthony Beale
- (Annex building at 10414 S. State is also available.)



[Click Here for Bid Information](#)

Contact Us

Mike Nardini
312 935 1030
Mike.Nardini@cbre.com

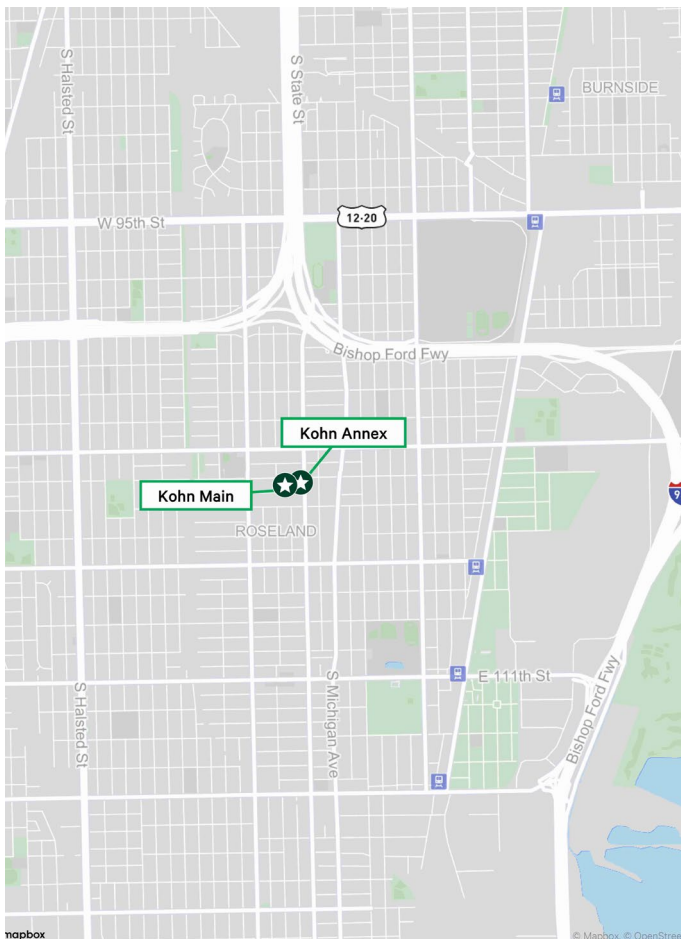
Nicole Mentone
312 297 7658
Nicole.mentone@cbre.com

Mitch Adams
312 935 1469
Mitch.adams@cbre.com

For Sale

CBRE

10401-25 S. Perry Chicago, IL



Contact Us

Mike Nardini
312 935 1030
Mike.Nardini@cbre.com

Nicole Mentone
312 297 7658
Nicole.mentone@cbre.com

Mitch Adams
312 935 1469
Mitch.adams@cbre.com

© 2025 CBRE, Inc. All rights reserved. This information has been obtained from sources believed reliable but has not been verified for accuracy or completeness. CBRE, Inc. makes no guarantee, representation or warranty and accepts no responsibility or liability as to the accuracy, completeness, or reliability of the information contained herein. You should conduct a careful, independent investigation of the property and verify all information. Any reliance on this information is solely at your own risk. CBRE and the CBRE logo are service marks of CBRE, Inc. All other marks displayed on this document are the property of their respective owners, and the use of such marks does not imply any affiliation with or endorsement of CBRE. Photos herein are the property of their respective owners. Use of these images without the express written consent of the owner is prohibited.