



The Daily Student Experience

CPS Vision

CPS Academic Cabinet

The 20 member Academic Cabinet has Combined

487 years in
education

407 years of
education at CPS

153
Years as a
Teacher

214
Years as a
School
Administrator

113
Years as a
Network/Central Office
Leader

8 are former
CPS Students

19 are parents of **43** current
and former CPS students

12 are people of color,
17 are multilingual

18 have experience serving
English Learners, **18**
have experience
serving Students with
Disabilities

The Daily Student Experience

Daily Learning Experiences



Rigorous



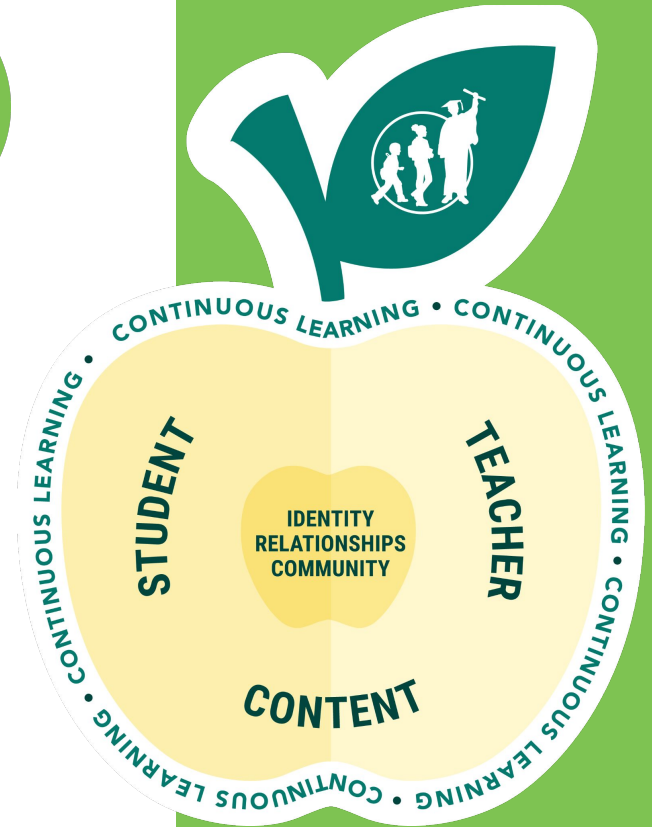
Joyful



Equitable

What does a **Rigorous** Daily Learning Experience look like?

- High-Quality Curriculum
- Rigorous Instruction
- Learning Acceleration Practices
- Helping Every Child Grow: Assessment and Feedback
- Helping Every Child Grow: Academic Interventions
- Sufficient and Holistic Instructional Time



High-Quality Curriculum



Rigorous

Every student engages in high-quality curriculum.



Standards-aligned



Horizontally-aligned
across instruction
and assessments



Vertically-aligned
across grade
bands



Accessible for
all learners



Supportive of
students'
social-emotional
learning



Culturally
responsive

High-Quality Curriculum:

- At Grade-Level
- Aligned within/Across Grade-Levels
- Meets all student needs
- Culturally responsive

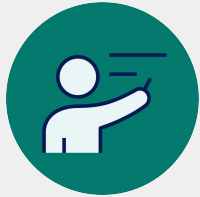
Rigorous Instruction



Rigorous

Every student is in front of a high-quality teacher every day.

Investing in Teacher Practice and Collaboration



CPS Teachers have

12

Paid Professional
Development Days



CPS Teachers lead large urban
districts in protected weekly
preparation time

(300 minutes for ES)



CPS allocates over **\$20M** into
school budgets to compensate
additional professional
development opportunities
outside of the 7 hour day

Rigorous Instruction



Rigorous

Every student is in front of a high-quality teacher every day.

Coaching and Mentoring Support

CPS centrally funds over

180
Lead Coaches

in school buildings

CPS centrally funds over

800
Mentors

For new teachers

CPS centrally funds

420
**Program Lead
Teachers**

to support teacher
colleagues in IB, STEM,
Gifted, PL, Dual Language,
Montessori and JROTC
programs

Accelerated Learning



Rigorous

Every student experiences accelerated learning, not remediation. And every student has access to advanced coursework.

- Expanding Access to **Middle School Algebra**
- **Advanced Coursework** in High School
- **Model Career Pathways**
(*CTE, Healthcare, IT, Manufacturing, Construction*)
- Record **Dual Credit and Dual Enrollment**

Leads to students graduating with postsecondary plans AND credentials/credits in place.



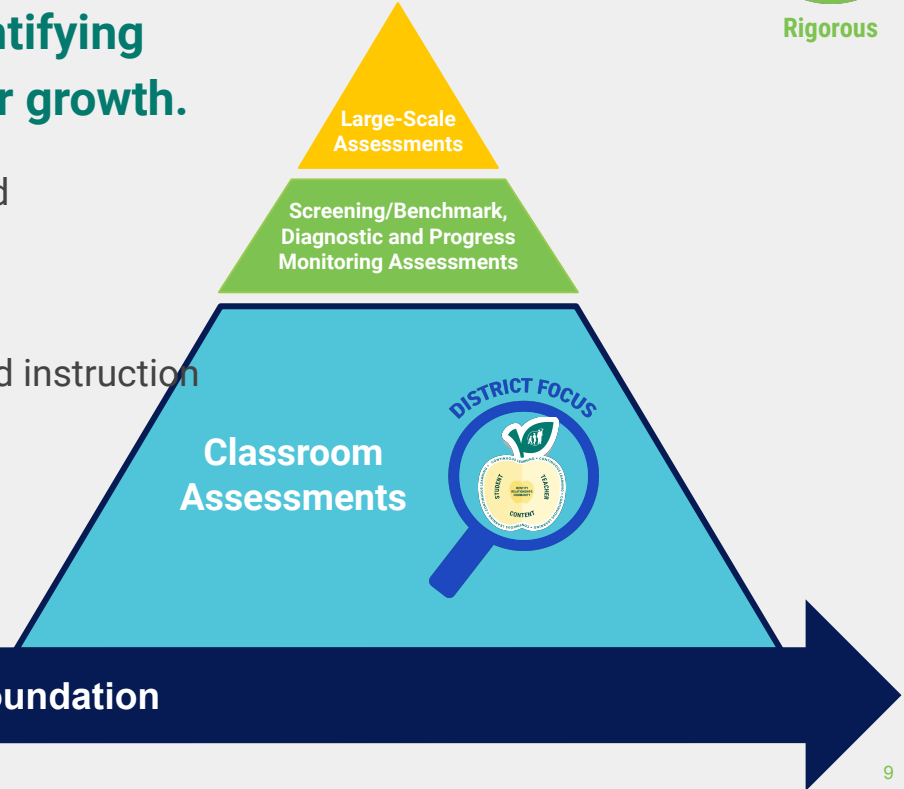
Helping Every Child Grow



Rigorous

Supporting every student starts with identifying student needs and providing feedback for growth.

- Teacher teams focus on lesson and unit tests and assignments, not standardized tests
- School teams use screening/benchmark assessments to support differentiated instruction and decisions for academic interventions
- Student grades are equitable across the district



Helping Every Child Grow

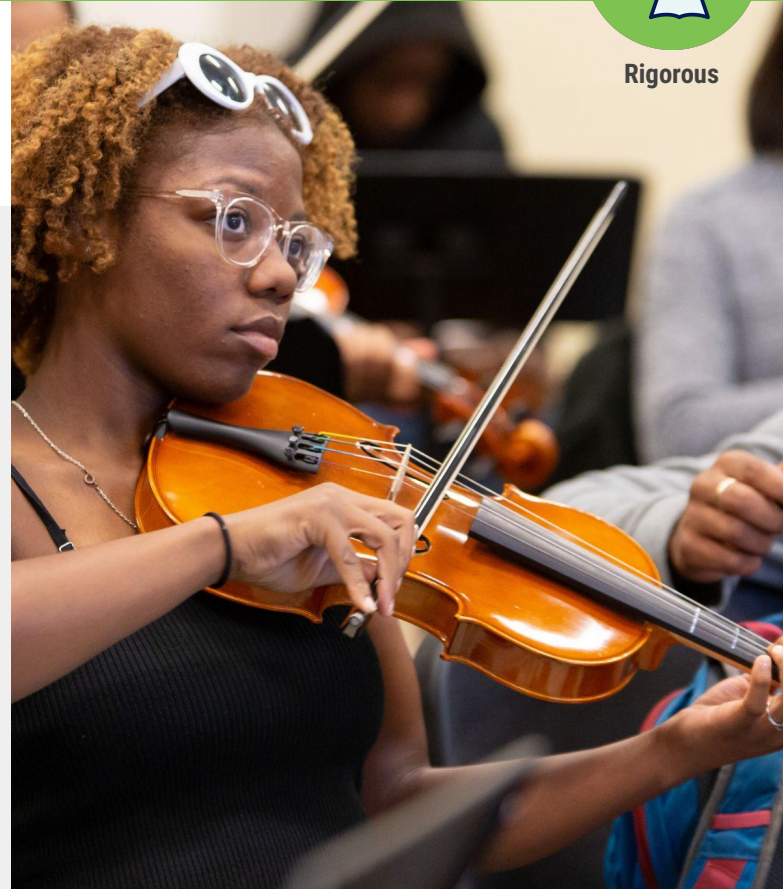


Rigorous

Every student receives the academic supports they need.

Teachers, Interventionists, and Teacher Teams need to:

- Identify student academic needs
- Provide targeted interventions so that students can access grade-level materials



Sufficient and Holistic Instructional Time: K-2 Day



Rigorous

Student Day:

- 7 hours
- 6 hours of instruction

K-2 Day			
Minutes	Student Day	Teacher Day	Time
	Arrival	Arrival	9:00
5 mins	Transition	Transition	9:00-9:05
120 mins	Literacy	Literacy	9:05-11:05
30 mins	Social Science	Social Science	11:05-11:35
5 minutes	Transition	Lunch	11:35-12:25
20 mins	Recess		
25 mins	Lunch		
20mins	Intervention Block	Intervention Block	12:25- 12:45
60 mins	Arts	Preparation Period	12:45- 1:45
90 mins	Math	Math	1:45- 3:15
40 mins	Science	Science	3:15-3:55
5 minutes	Transition	Transition	3:55-4:00
	Instructional Mins: 360	Instructional Mins: 300	

Teacher Day:

- 7 hours
- 5 hours of teaching

Sufficient and Holistic Instructional Time: 6-8 Day



Rigorous

Student Day:

- 7 hours
- 6 hours of instruction

6-8 Day			
Minutes	Student Day	Teacher Day	Time
	Arrival	Arrival	9:00
5 mins	Transition	Transition	9:00-9:05
60 mins	Literacy	Literacy A	9:05-10:05
60 mins	Math	Literacy B	10:05-11:05
60 mins	Arts	<i>Preparation Period</i>	11:05-12:05
5 minutes	Transition	<i>Lunch</i>	12:05-12:55
20 mins	Recess		
25 mins	Lunch		
60 mins	Science	Literacy C	12:55-1:55
60 mins	Social Science	Literacy D	1:55-2:55
60 mins	Intervention/Enrichment	Intervention/Enrichment	2:55-3:55
5 mins	Transition	Transition	3:55-4:00

Teacher Day:

- 7 hours
- 5 hours of teaching

Sufficient and Holistic Instructional Time: 9-12 Day



Rigorous

Student Day:

- 7 hours 15 mins
- 5 hours and 50 minutes of instruction

9-12 Day			
Minutes	Student Day	Teacher Day	Time
	Arrival	Arrival	9:00
50 mins	English I	English I (A)	9:00-9:50
5 mins		Transition	9:50-9:55
50 mins	Algebra	Prep	9:55-10:45
5 mins		Transition	10:45-10:50
50 mins	Biology	English I (B)	10:50-11:40
5 mins		Transition	11:40-11:45
50 mins	World Studies	English I (C)	11:45-12:35
5 mins		Transition	12:35-12:40
50 mins	Lunch	Lunch	11:40-1:30
5 mins		Transition	1:30-1:35
50 mins	Spanish	English I (D)	1:35-2:25
5 mins		Transition	2:25-2:30
50 mins	Music	Prep	2:30-3:20
5 mins		Transition	3:20-3:25
50 mins	Physical Education	English I (E)	3:25-4:15

Teacher Day:

- 7 hours 15 mins
- 4 hours and 12 minutes of teaching

Sufficient and Holistic Instructional Time



Rigorous

Every student is engaged in sufficient and holistic instructional time.

Elementary School

- All content areas daily
- All schools have minimum 4 Middle School teachers
- **1,806 Centrally-Funded Holistic Teaching Positions**
 - Every school has a minimum of 3 Holistic Teachers
 - Arts (any disciplines)
 - Physical Education
 - Third discipline position (*World Language, Technology, Library Science, additional Arts disciplines, STEM Lab, etc.*)



Sufficient and Holistic Instructional Time



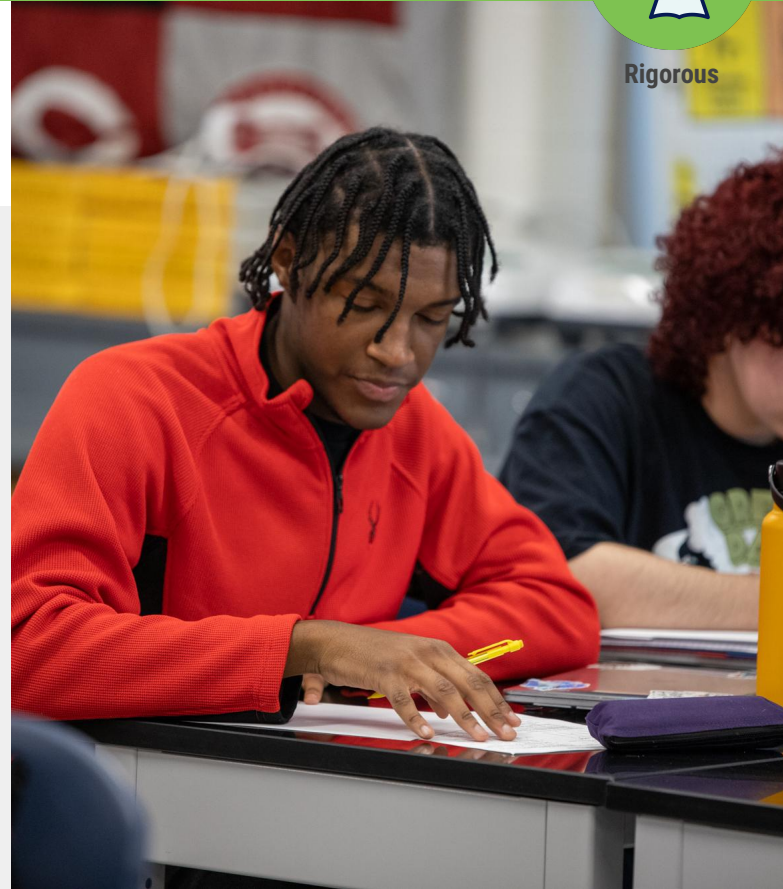
Rigorous

Every student is engaged in sufficient and holistic instructional time.

High School

Centrally-Funded Staff to support every student accessing:

- **4** years of English
- **3** years of Math, Science, Social Science, Electives
- **2** years of World Language, Fine Arts, PE, Career Ed, Computer Science
- Service Learning and Consumer Education



What does a **Joyful** Daily Learning Experience look like?



- **Holistic**
- **Supportive of Student**
 - Connectedness
 - Belonging
 - Wellbeing





Joyful



Out of School Time Programming and Athletics



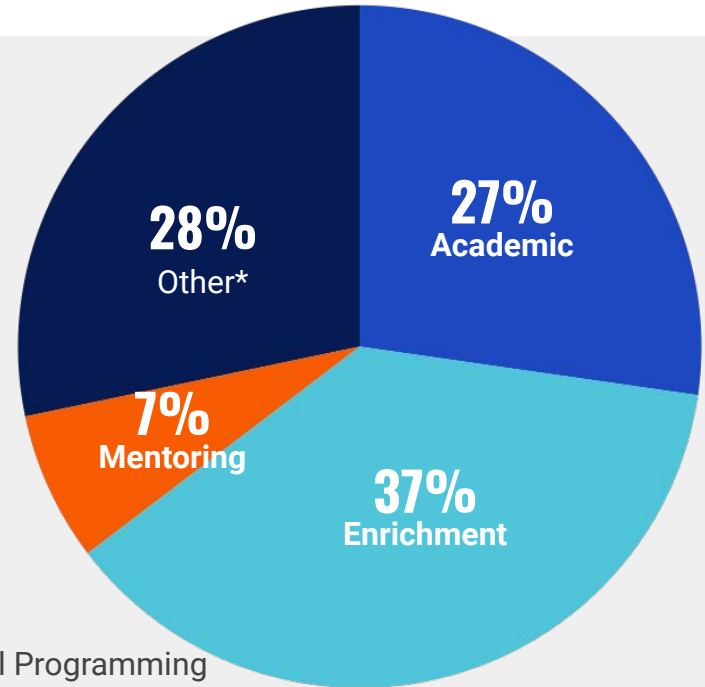
Joyful

Every school provides engagement opportunities through out of school time (summer and school year) programming and athletics.

Breakdown of District OST Programming:

522 Schools

115,000 Students



*Includes: Athletics, Health and Wellness, SEL, and Virtual Programming

Out of School Time Programming and Athletics



Joyful

Every school offers/provides engagement opportunities through out of school time (summer and school year) programming and athletics.

41.6%

of students participated in OST/CSI/SCS programming

so far this year, up from 38.6% at this point last year

11,000

more students participating in programming as compared to last year

400,000+

Program Hours, or 20 hours per school per week (up from 17 hours last year)

175+

OST Community-Based Partners Engaged with Schools

Improved program participation among all priority groups (Students with Disabilities, Black and Latinx Males, and Chronically Truant)

Work-Based Learning and Career Exposure



Joyful

Every student is exposed to postsecondary opportunities.

1,300

SY23 Summer Internships
provided to mostly Black
and Latinx students

Career Spotlight Days

This year, we impacted

3,265 students

(1784 HS + 1481 MS)

642 CPS staff members &

151 schools

+9,000

Work-Based
Learning experiences

Restorative Practices and Student Supports



Joyful

Every school offers opportunities for students to feel as though they belong and are connected.

Restorative Practices

477 Active Behavioral Health Teams in Schools

132 Restorative Justice Coordinators
(+90 to last year)

Wraparound Supports

869 Counselors
208 schools 1:250 ratio
105 schools 1:200 ratio

272 schools with a behavioral health or mentoring community partner
11,130 students received school-day behavioral health and/or mentoring services

62 STLS Advocates and **300** STLS Liaisons

**Students in Temporary Living Situations*

What does an **Equitable** Daily Learning Experience look like?



- Equitable resourcing
- High-quality practices and conditions in every school



Equitable Resourcing



Equitable

Every school receives equitable resourcing based on the needs of their student population.

Move away from Student Based Budgeting to allocate resources by need using CPS Opportunity Index which measures need based on:



Community Factors



Student Demographics



Historical Funding

Equitable Resourcing



Equitable

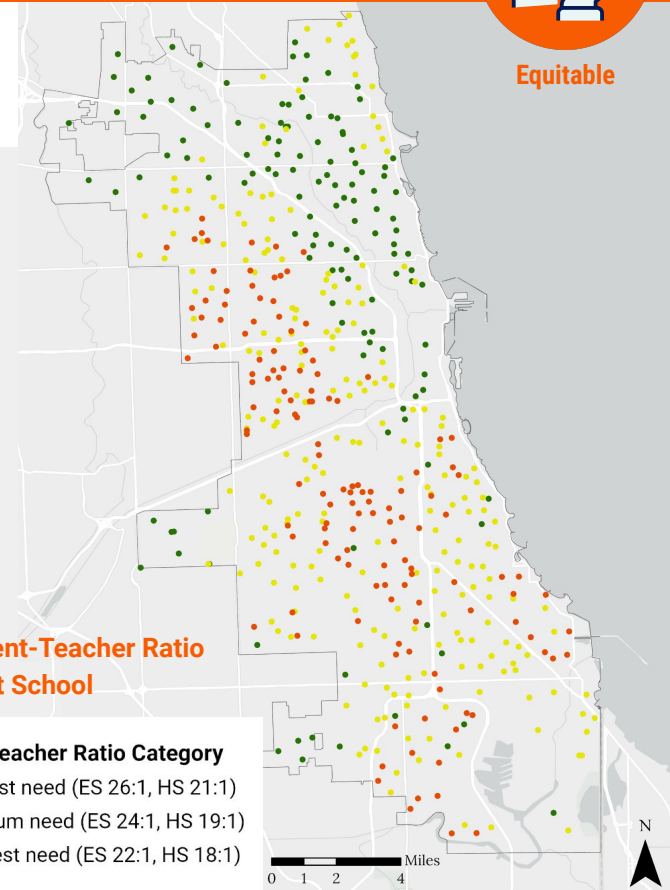
New Foundational Teacher Funding Model

Elementary School Teachers	
Core Classroom Teachers K-8	<p>1 teacher for every:</p> <ul style="list-style-type: none">• 26 students for schools with an Opportunity Index sum score of 30 or less• 24 students for schools with an Opportunity Index sum score between 31-41• 22 students for schools with an Opportunity Index sum score between 42-52 <p>Minimum of 10 teachers</p>
Holistic Teachers	<p>A ratio of 1 holistic teacher for every 5 core classroom teachers OR Minimum of 3 teachers</p>

F25 Student-Teacher Ratio by District School

Student-Teacher Ratio Category

- Lowest need (ES 26:1, HS 21:1)
- Medium need (ES 24:1, HS 19:1)
- Highest need (ES 22:1, HS 18:1)



Equitable Resourcing



Equitable

New Foundational Teacher Funding Model

High School Teachers

1 teacher for every:

- 21 students for schools with an Opportunity Index sum score of 30 or less
- 19 students for schools with an Opportunity Index sum score of between 31-41
- 18 students for schools with an Opportunity Index sum score of between 42-52

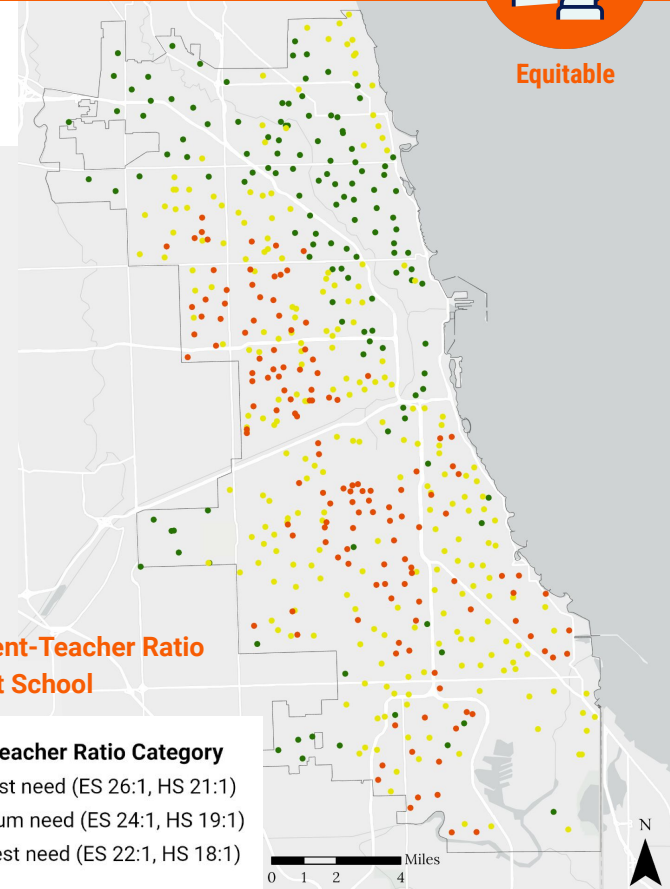
OR

A minimum of 10 teachers to ensure a full complement of required courses.

F25 Student-Teacher Ratio by District School

Student-Teacher Ratio Category

- Lowest need (ES 26:1, HS 21:1)
- Medium need (ES 24:1, HS 19:1)
- Highest need (ES 22:1, HS 18:1)



Equitable Resourcing



Equitable

Every school receives equitable resourcing based on the needs of their student population.

Increased staffing in This Year's school budgets

+270

Classroom Teachers

+243

Special Education
Teachers

+661

Special Education
Classroom Assistants

+90

Restorative Justice
Coordinators

+28

English Language
Program Teachers

+2,200 total school-based positions in SY25 (Average: 4+ teachers per school)

Last School Year:

Elementary Average Class Size: **22** | High School Average Class Size: **20**

Equity in Conditions and Practices



Equitable

Every school implements the high-quality practices that drive a rigorous and joyful daily learning experience.



Districtwide investments sustain and prioritize the research-based practices that helped CPS lead the nation in academic recovery



Districtwide curricular, instructional, assessment, grading policies adhered to by all schools to ensure every student in every neighborhood experiences a high-quality learning experience



Quality school leader who sets a clear instructional vision and expectations for their school community through distributed leadership cultures and structures



Chicago Public Schools

Of the 40 large urban districts from the Council of the Great City Schools with Education Recovery Scorecard reporting in reading,

**CPS was #1 in Reading Growth
from 2022 to 2023
and #1 in Reading gains from 2019-2023**





Chicago Public Schools

Of the 40 large urban districts from the Council of the Great City Schools with Education Recovery Scorecard reporting in both reading and math,

CPS was #3 in Combined Reading and Math Growth from 2022 to 2023





Chicago Public Schools

Reading achievement continues upward trajectory in SY24
5 percentage point increase from SY23

Surpassing pre-pandemic levels

Students performing in the lowest two performance levels (1 and 2) decreased 4 percentage points from SY23 to SY24



Protect and Sustain

- High-quality curriculum and instruction
- Strong aligned systems of interventions and support
- Well-rounded, holistic programming
- Instructional time
- Professional development
- Student voice
- Community partnerships

