



ECRC Advisory Council Meeting January 30, 2024

1



Welcome

Please share your name, organization, title, and your go-to karaoke song in the chat.

Bienvenido

Por favor, comparte tu nombre, organización, cargo y su canción de karaoke en el chat.

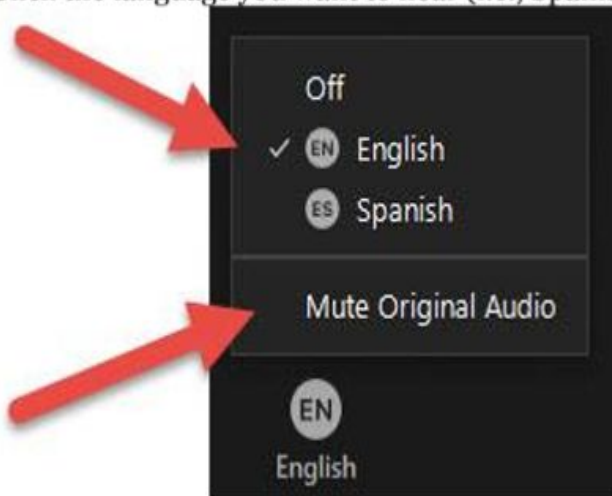


We Have Spanish Interpretation Tenemos Interpretación de Español

1. Click the **Interpretation globe** icon at the bottom of the screen.



2. Click the language you want to hear (i.e., Spanish).



3. Click "**Mute Original Audio**" to silence all other languages.

A Escuchar en Español:

1. Haga click el icono del globo
2. Elegir "Spanish"

 Agenda

1. Welcome
2. ECRC Executive Committee Update
3. Block Grant Listening Session
4. Partner Updates
5. ECRC Executive Committee Interest
6. Closing Remarks
7. Adjourn

ECRC Executive Committee

Recently they have:

- Supported Block Grant Listening Session facilitation
- Reviewed Block Grant Listening Session insights & recommendations to further surface questions

They are meeting next to:

- Finalize the 2023 ECRC synthesis
- Review ECRC Executive Committee membership interest
- Support developing a strategic framework & action plan to guide the work of ECRC





Block Grant Listening Session

	Action	Timeline
✓	Host first community engagement listening session	Dec 12 - 13
✓	Synthesize listening session findings	Dec 14 - Jan 10
✓	Share insight report with ECRC Exec Committee	Jan 12
✓	ECRC Exec Committee meet to discuss insights + surface questions/concerns	Jan 25
★	City of Chicago discuss findings & possible improvements	Jan 19 - 31
	City of Chicago finalize funding administration decision	Feb 1 - 15
	<i>Postponed – last community engagement session</i>	<i>TBD</i>

New Arrivals

Jesus Del Toro

Chicago Early Learning

Chicago Public Schools - DFSS Collaborative

Newcomer Enrollment, Support and Services

Bilingual, Early Childhood, and Special Education



*Office of Language and
Cultural Education
(OLCE)*



CPS Newcomer Enrollment Process



Arrival

Newcomers arrive and are housed at Police Districts and Airport



CPS Notification

Newcomers moved to Shelter and DFSS provides manifest of school aged children to CPS



School Assignment

OLCE coordinates with Network Chiefs to find seat availability at schools within 2 mile radius of Shelter* and assigns each child a school



School Enrollment

Centralized enrollment completed via one of the [Newcomer Enrollment Pathways](#); Network Chiefs notified daily of new children** who have been assigned to or enrolled in schools in their Network; and pass on this information daily to schools



School Notified

At the time of enrollment being completed, family is given flyer with school placement and one week bus card so that the child can immediately begin attending school



Engagement & Supports

Once a Newcomer has begun attending school; CPS provides ongoing school and district based engagement and supports

*These steps describe the centralized CPS enrollment process currently in place for Newcomer students. This process is subject to change at any time given the dynamic nature of the situation. **Please note: any Newcomer student has the right to walk into their neighborhood school to enroll and, in these cases, the school should enroll the child rather than follow this centralized process.***

Roles in Newcomer Enrollment Process

Central Office	Network	School
<ul style="list-style-type: none">❑ Partner with Network Chiefs and Principals to find seat availability at schools❑ Based on seat availability at schools, assign Newcomers to schools for enrollment❑ Enroll Newcomers at assigned schools❑ Notify Network staff of students that have been enrolled or assigned to schools in their Network❑ Partner with Shelter Coordinators to decide on a case-by-case basis how to address requests for within district transfers❑ Early Childhood Team (OECE) will help to identify best fit school and enroll children in school	<ul style="list-style-type: none">❑ Partner with Central Office find seat availability at schools❑ Notify schools of students that have been enrolled or assigned for enrollment at the school❑ Obtain resources and neighborhood supports from CPS Welcoming Center❑ Partner with STLS for additional supports/resources for families❑ DRs (thru ODLSS) support assessment and placement for students with suspected disability❑ OECE to partner with Central Office find Gen Ed seat availability at schools via Chicago Early Learning (CEL)	<ul style="list-style-type: none">❑ Assign enrolled student a Homeroom❑ Conduct the WIDA screener❑ Coordinate STLS bus cards for students❑ See OLCE Newcomer Resource for tools and resources that will assist schools in supporting Newcomers❑ Direct Newcomers who are requesting a within CPS transfer to their Shelter Coordinator who will work with Central Office to determine next steps based on the situation and feasibility of transfer

OLCE Newcomer Enrollment Pathways

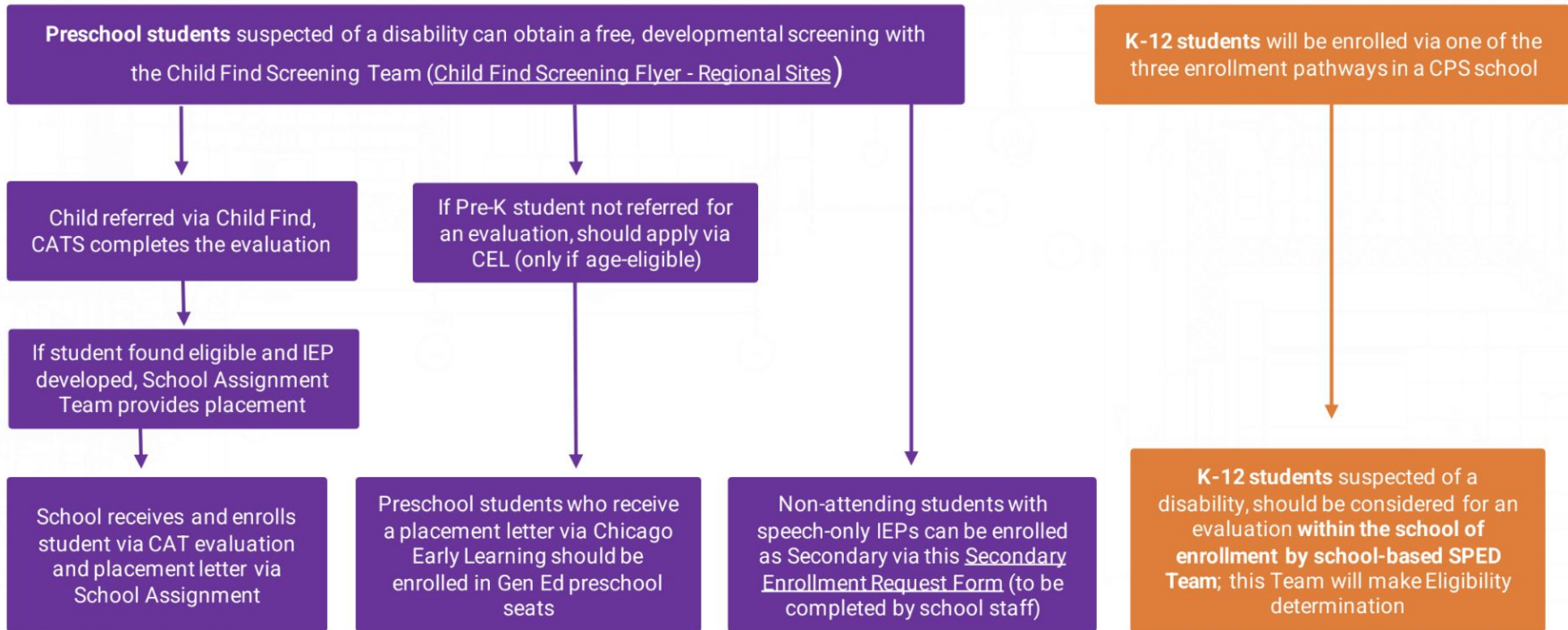
	Neighborhood School Walk-In Enrollment	Mobile Enrollment Unit	Welcome Center (Clemente)
Who is eligible?	Any school age child in Chicago is eligible to enroll in their Neighborhood School at any time	Newcomers staying at Shelters	A subset of families staying at Shelters, PDs, or dubbing up with other families, will receive an appointment/or can walk in to the Welcome Center
What school does the child enroll in?	Neighborhood school based on the child's home address	Best fit school* as identified by CPS Central Office staff	Best fit school* as identified by CPS Central Office staff
Who enrolls the child?	The school clerk	OLCE Mobile Team	Welcome Center clerk
Who provides students with STLS transportation cards?	School of enrollment/STLS liaison	CPS Mobile Until provides cards for 1st week on school commute.	Welcome Center provides cards for 1st week on school commute.
Who conducts the student's social-emotional, academic, and linguistic assessments?	School of enrollment	School of enrollment; CATS if student has suspected or documented low-incidence diagnosis that cannot be supported at the assigned school	Welcome Center; CATS if student has suspected or documented low-incidence diagnosis that cannot be supported at the assigned school

*Best fit school is the school which has the capacity to provide appropriate supports and instructional setting to the student and which the family can travel to daily.

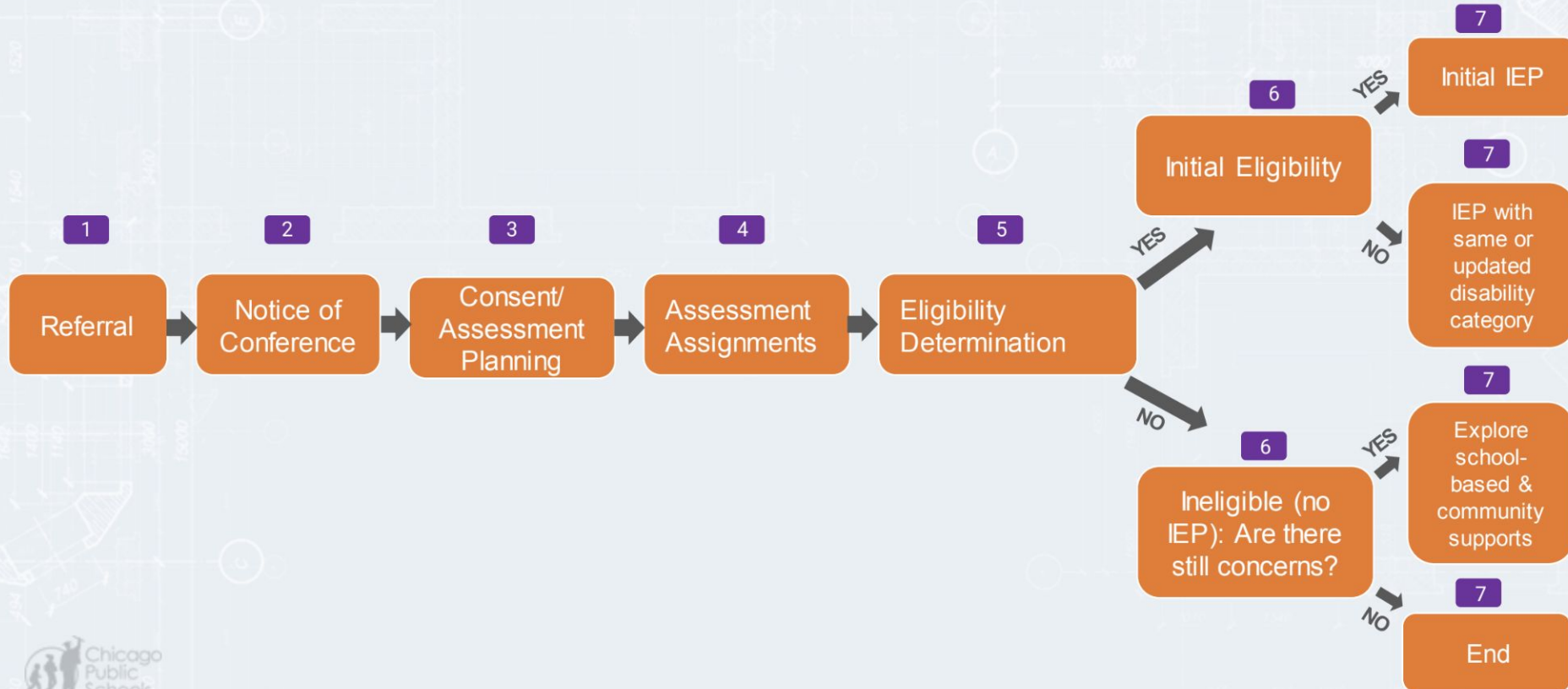
*Office of Diverse Learner
Supports and Services
(ODLSS)*



Special Education Evaluation & Placement Process



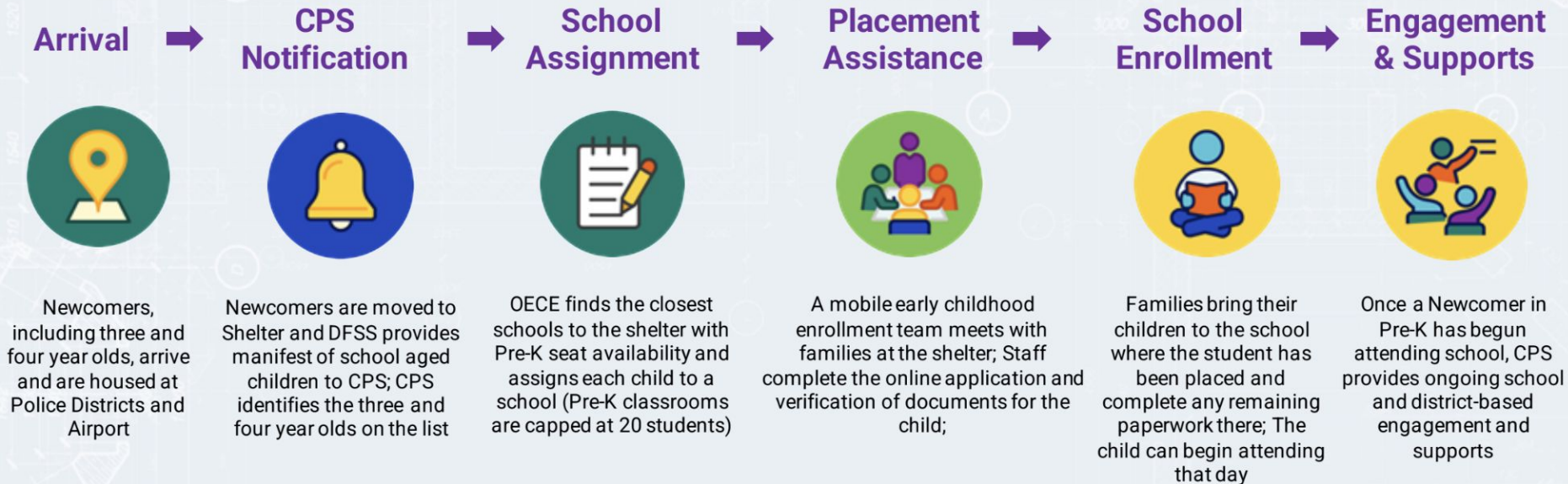
Special Education Evaluation Steps



*Office of Early Childhood
Education
(OECE)*



Newcomer Pre-K Enrollment Process



*These steps describe the centralized Pre-K enrollment process currently in place for Newcomer students. **Please note- any Newcomer student can apply for a Pre-K program at a school site, over the phone, or with the assistance of another volunteer. Class sizes, however, must be capped at 20 students and schools CANNOT enroll additional students when they are at capacity. All families must complete an online application and receive a valid CEL offer before they can be enrolled in Aspen.***

Pre-K Enrollment Pathway

	School Walk-In Enrollment	Mobile Enrollment Unit	By Phone or Online
Who is eligible?	Pre-K does not have neighborhood guarantees; Any student is eligible to enroll in any school provided that there are open seats	Newcomers staying at Shelters or Police Departments	Families (with volunteer assistance if needed) can call CPS Early Childhood at (773) 553-2010 to provide their information and receive a placement over the phone
What school does the child enroll in?	Any CPS school with open Pre-K seats	Best-fit school* as identified by CPS Early Childhood Staff	Best-fit school* as identified by CPS Early Childhood Staff
Who enrolls the child?	The school clerk completes the application and enrollment process	The Early Childhood team will complete the application and the school clerk will complete enrollment at the school	The Early Childhood team will complete the application and the school clerk will complete enrollment at the school
Who provides students with STLS transportation cards?	School of enrollment	Shelter until school of enrollment is able to provide	School of enrollment
Who conducts the student's social-emotional, academic, and linguistic assessments?	School of enrollment	School of enrollment	School of enrollment

*Best fit school is the school which has the capacity to provide appropriate supports, **has space to enroll the student**, and which the family can travel to daily

Pre-K Enrollment Process



Students must be **3 years of age by September 1st** of current school year to qualify for Pre-K programming in CPS



Families can **apply via Chicago Early Learning (CEL)** (chicagoearlylearning.org) for general education preschool seats; If a student is provided a seat via CEL, they can enroll in a CPS preschool with their placement letter



Pre-K *does not* have neighborhood guarantees; **any student is eligible to enroll in any school** provided that there are *open seats*



Families (with volunteer assistance if needed) can **call CPS Early Childhood at (773) 553-2010** to provide their information and receive a placement over the phone

*Department of Family
and Support Services*
DFSS



CSD New Arrival Recruitment & Enrollment Process



Children Services Division (CSD) maps nearby Community Based Organizations (CBOs) in relation to nearby shelters

CBOs closest to shelter within 1-2 miles radius

1



CSD determines interest of CBOs to conduct in-shelter enrollment event

Interest and availability are gauged via number of vacancies across all programming, nearest family shelters, etc.

2



CBOs confirm interest with CSD and are then connected with Homeless Services Division (HSD) to collect relevant information

CBOs share their program flyer, confirm # of open slots by program type, provide 2 suggested dates for enrollment event, etc.

3



CSD and HSD connect CBOs with shelter to finalize and execute in-shelter enrollment event

DFSS introduces the CBOs to the shelter staff and confirm enrollment event dates

4



CBOs and shelter report back within 24 hours to CSD and the Department of Family and Support Services (DFSS)

of children enrolled,
of families who completed CEL application,
of family interactions

5

DFSS Newcomer Enrollment Process

DFSS CEL	CPS	CBO
<ul style="list-style-type: none"> ❑ Each DFSS facilitated family shelter creates a manifest of number of children with age ranges of children housed. ❑ The family shelter provides a list of school age children 3-17 years to CPS and the Homeless Services Division provides age ranges of children for each shelter to CSD. ❑ CSD contacts CBO's within the two to three-mile radius of each shelter to confirm available capacity to coordinate an enrollment event at the shelter site. ❑ CSD/shelter staff schedule events and track enrollments and engagements of families from enrollment events. ❑ All enrollment events must be scheduled through DFSS for time, date, and contact person coordination. 	<ul style="list-style-type: none"> ❑ CPS works with school age manifest to place children in school based on seat availability within a two-mile radius. ❑ A list of all early childhood children ages 3 –5 years that are not placed in a school based program due to capacity are sent to DFSS – CSD. 	<ul style="list-style-type: none"> ❑ CBO's can contact CSD at sharay.johnson@cityofchicago.org to discuss and schedule potential enrollment event on site. ❑ CSD will also contact CBO's based on proximity to shelter location and/or homevisiting program vacancy/seat availability to conduct a shelter enrollment event. ❑ CBO's will track each enrollment events and provide documentation to CSD at the end of shelter engagement. ❑ All enrolled children identified or suspected for "<i>special education services</i>" will be referred through the normal screening process for CBO participants.

Contact Information

- Parent Hotline

- Chicago Early Learning Family Support Hotline: 312-229-1690
- Online: <https://www.cps.edu/ChicagoEarlyLearning/>

- OLCE

- OECE

- DFSS

- Sharay Johnson, Manager of Program Operation & Quality, Children Services Division
 - 312-743-1992 or sharay.johnson@cityofchicago.org

- ODLSS



PARTNER UPDATE

**Illinois Department of Children &
Family Services**

Shontée Blankenship

Edie Washington



PARTNER UPDATE

Chicago Early Learning Workforce Scholarship

Sandy De León

ECRC 01.30.2024



CHICAGO EARLY LEARNING

WORKFORCE

SCHOLARSHIP



WELCOME OUR NEW
TEAM MEMBER!

Mohammed "Moe" Azaan
CELWS Manager

Guadalupe Valdivia, CELWS
Manager



Chicago Early Learning

Reels · Aug 29

Sandy De León

Executive Director CELWS

Sandy De Leon, Executive Director f... more



APPLICATIONS

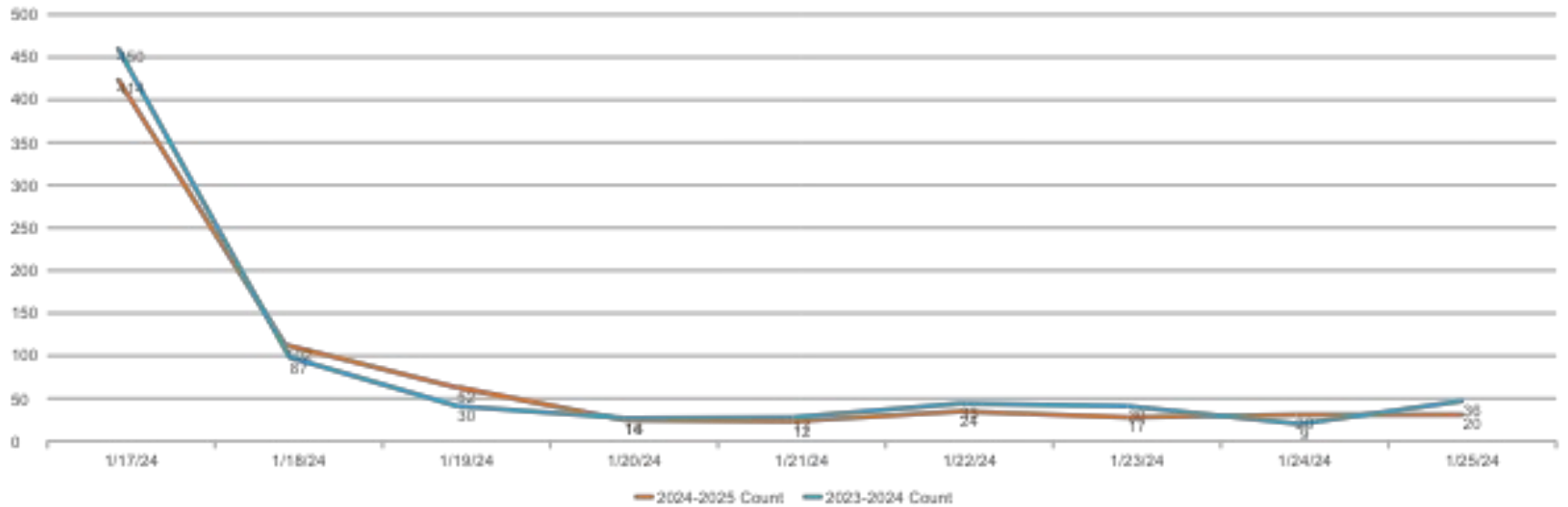
2024-25 ACADEMIC YEAR




DAY 1 TAKEAWAYS

- Day 1 total submissions (with duplicates removed): **414 applications!**
- This number surpassed 2021 and 2022 total submissions, but missed 2023 Day 1 by 8%
 - Day 1 2024: 414
 - Day 1 2023: 450
 - Day 1 2022: 132
 - Day 1 2021: 225
- The highest number of applications within 7-hour span came in first 9:00-10:00am hour with total 107 submissions
- A total 60 applications were submitted in the first 30 minutes, meaning 2 applications were submitted every minute! This figure surpassed 2023 submissions.

SUBMISSIONS THROUGH DAY 9



- 
- 675 applications submitted through Day 9
 - 61% reported being employed in a Chicago Early Learning (CEL) program- CBO or CPS
 - Of those in CEL, 77% reported being employed in CBOs and 23% in CPS
 - 64% are NOT currently enrolled at a college/university
 - Combined, 90% of applicants have identified as Black/African-American or Hispanic/Latino@xe
 - Majority of applications received were for Bachelor's degree, followed by Associates Degree.
(Note: These figures do not take into account actual eligibility for degree. Rerouted #s will be reported soon).
 - For Bachelor's Degree applications, 78% were for Degree WITH Licensure

ORIGINAL SUBMISSIONS- PROGRAM/DEGREE SOUGHT

Program or Degree sought	Count	Percentages
Associate's Degree	227	34%
Bachelor's Degree (Licensure + No Licensure)	291	43%
Gateways to Opportunity Credential	59	9%
Alternative Licensure program	48	7%
Subsequent Endorsement to the Professional Educator's License (PEL)	50	7%
Grand Total	675	



IMPACT

HISTORICAL & 2022-23 ACADEMIC YEAR



2022-23 ACADEMIC YEAR IMPACT

	Fall 2022	Winter 2023- NLU	Spring 2023	Summer 2023	EOY count
Scholars engaged	531	N/A	483	475	568
New Scholars awarded	153	1	39	2	195
Degrees and/or academic pathways earned or completed (includes transfers)	97	10	44	15	166
Additional non-degree coursework completed to upskill or transfer	11	0	3	4	18
Transfer awardees that began Bachelor's degree	15	10	1	2	28

GRADUATES/COMPLETERS: 2022-23 ACADEMIC YEAR IMPACT

Degree/Academic pathway		
Associate degree	28	18.92%
Bachelor's degree	35	23.65%
College Certificate	17	11.49%
Masters	2	1.35%
Alternative Licensure program	41	27.70%
Endorsement	25	16.89%
Total	148	

Endorsements	
English as a Second Language (ESL)	21
Early Childhood Special Education (ECSE)	4
Early Childhood Education (ECE)	41

Licensure	
Professional Educator's License (Content exam passed)	56

PEL EARNERS: 2022-23 ACADEMIC YEAR IMPACT

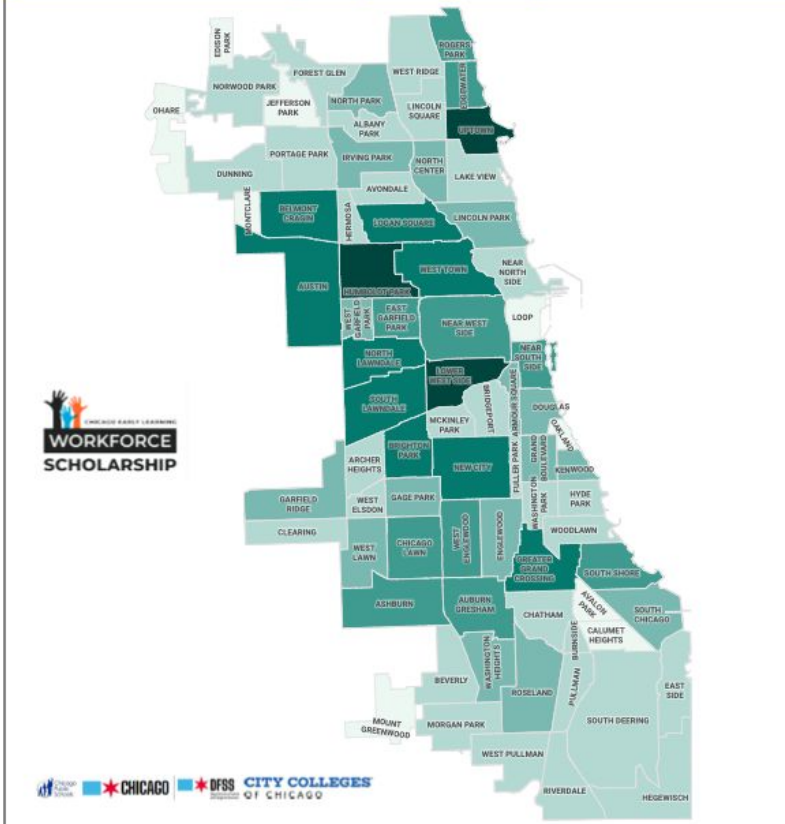
	Fall 2022	Winter 2023	Spring 2023	Summer 2023	EOY count
Roosevelt University	0	0	2	0	2
National Louis University	2	5	6	0	13
University of Illinois at Chicago (UIC)	41	0	0	0	41
	43	5	8	0	56

GATEWAYS CREDENTIAL EQUIVALENCY FOR ACADEMIC PATHWAYS

Gateways Credential equivalency	
ECE Level 2	20
ECE Level 3	4
ECE Level 4	13
ECE Level 5	37
FSC Level 2	3
FSC Level 3	1

Gateways Credential equivalency	
FSC Level 4	3
FSC Level 5	3
ITC Level 3	1
ITC Level 4	0
ITC Level 5	4

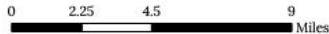
Historical Scholarships by Community Area of Work



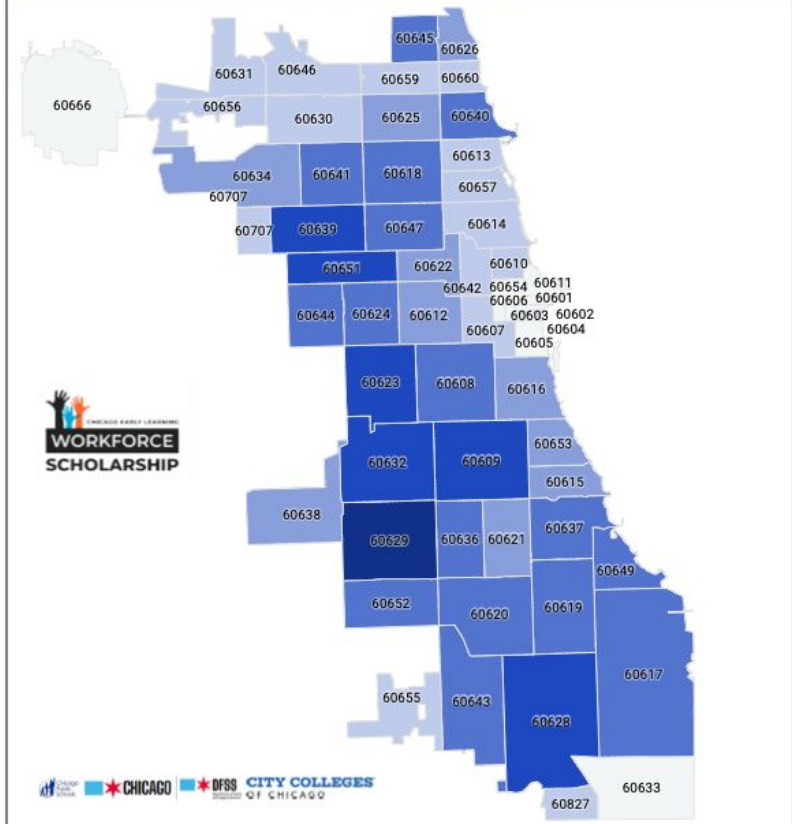
of Scholarship Recipients

- No Recipients
- 1 - 4
- 4 - 10
- 10 - 18
- 18 - 28
- 28 - 45

Total Recipients: 1059
 Note: All recipients in the total are not represented on the map
 Source: PDM, CPS | November 2023



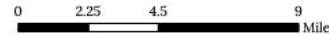
Historical Scholarship by Residing Zip Code



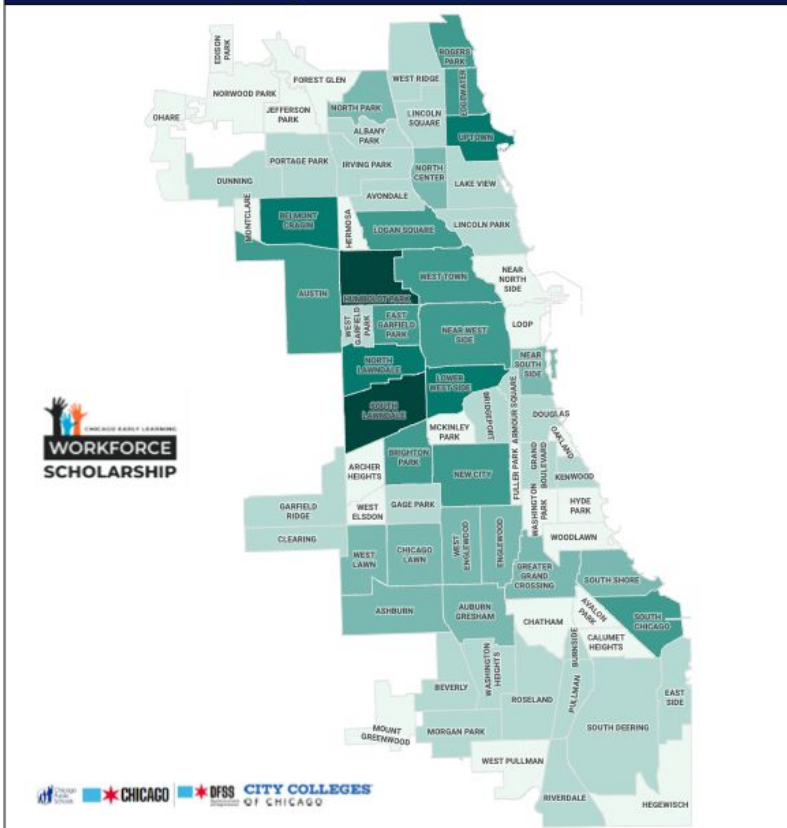
of Scholarship Recipients

- No Recipients
- 1 - 6
- 6 - 12
- 12 - 24
- 24 - 37
- 37 - 56

Total Recipients: 1059
 Note: All recipients in the total are not represented on the map
 Source: PDM, CPS | November 2023



SY23 Scholarships by Community Area of Work



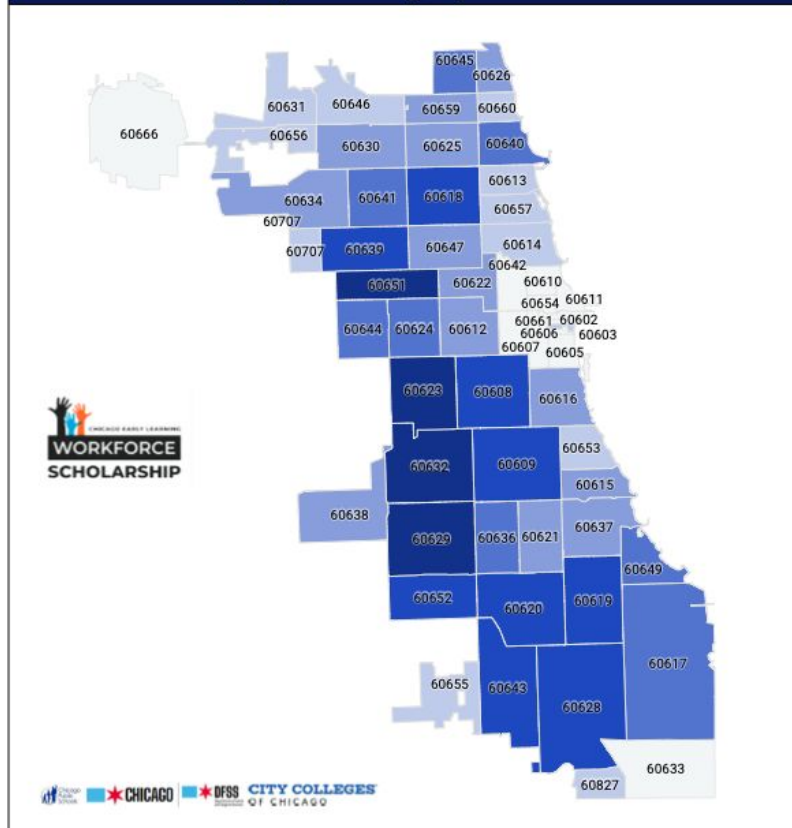
of Scholarship Recipients

- No Recipients
- 1 - 2
- 2 - 4
- 4 - 7
- 7 - 12
- 12 - 15

Total Recipients: 567
 Note: All recipients in the total are not represented on the map
 Source: PDM, CPS | November 2023

0 2.25 4.5 9 Miles

SY23 Scholarship by Residing Zip Code



of Scholarship Recipients

- No Recipients
- 1 - 4
- 5 - 8
- 9 - 13
- 14 - 18
- 19 - 31

Total Recipients: 567
 Note: All recipients in the total are not represented on the map
 Source: PDM, CPS | November 2023

0 2.5 5 10 Miles

2023-24 ACADEMIC YEAR

Fall '23 term

557 Scholars engaged

65 degrees earned/academic pathways completed

13 non-degree coursework completed to upskill/transfer

Fall '23 - Spring '24 semester of award

204 new scholarships across IHEs



FALL '23 TERM

Associate's	
Child Development Pre-School Education	171
Human Development and Family Studies	14
Social Work Generalist	10
Other/Undecided	40
	235
Bachelor's	
Applied Educational Studies	19
ECE - Licensure	133
ECE - non-licensure	14
Infant Toddler Studies	15
	181

Certificates	
Child Development Pre-School Education - Advanced	10
Child Development Pre-School Education - Basic	4
Child Development Infant Toddler Studies - Advanced	2
Human Development & Family Studies - Basic	4
Early Childhood Special Education	3
English as a Second Language (ESL)	1
	24
ALP	
Alternative Licensure program	78
Coursework only	
Coursework- for transfer/upskilling	39

Total Scholars engaged for term: 557

THANK YOU!





PARTNER UPDATE

Chicago Department of Public Health

Madeline Shea

ECRC Executive Committee Meeting

CDPH Updates

*Bureau of Maternal, Infant, Child, and Adolescent Health
(MICAH)*

January 30, 2024

Family Connects Chicago Updates



Program Updates

- Over 6,066 home visits made to families since launch in spring 2020
- Evaluation of referral connection component in contracting phase
- Next Citywide Advisory Council meeting: February 29, 10am – noon

Birthing Hospital Onboarding Update

- Offering services: Humboldt Park Hospital, St. Anthony, Rush, UChicago Medicine, Mt. Sinai Hospital, Swedish Hospital, Roseland Hospital (7 hospitals)
- Winter 2024 launch: Stroger
- Spring 2024 launch: Ascension system, Advocate system (5 hospitals)
- Summer 2024 launch: UI Health
- Fall 2024 launch: Call center (portion of Northwestern patients)

Family Connects Chicago Goals



Goals for 2024

- Launch 6 remaining hospitals in the city of Chicago
- Increase citywide reach to 60%
- Build warm hand off to long-term home visiting programs and identify other improvements to ensure successful referral connections
- Secure additional funding to sustain scaling efforts beyond expiration of Recovery dollars

Other CDPH Updates



Lead Poisoning Prevention & Healthy Homes Program

- Expanded services anticipated to roll out mid 2024; eligibility up to 140% AMI
- 2024 Goals:
 - Launch program expansion by spring; repair at least 203 homes in 2024
 - Build stronger interdepartmental collaborations
 - Establish Chicago Department of Public Health Lead Community

Nutrition/WIC Program

- Illinois WIC & Head Start Collaboration Office renewed MOU
- Participating in pilot to mobilize WIC. Services expected to launch spring 2024
- 2024 Goals:
 - Achieve 90% of assigned caseload (21k+ households)
 - Increase breastfeeding rates, at least 35% exclusivity
 - Expand professional development, ensuring at least one IBCLC
 - Enhance community outreach efforts

Other CDPH Updates



- Maternal child health epidemiology/data reports: Infant Mortality Report in process, expected release in mid-2024
- Air Filters: Program under development to distribute air filtration systems to some child care centers
- Vaccines: ECE programs can utilize Chicago CareVan - mobile immunization clinic that offers services at no cost at Head Start, child care centers, schools, public housing sites, WIC centers, and community events. More information: https://www.chicago.gov/city/en/depts/cdph/supp_info/clinical_health/immunization_clinics.html
- Leadership: Dr. Olusimbo Ige started as Commissioner in December 2023

★ Contact Information

- WIC Program:
 - Kelsey McGuire, Regional Nutrition Coordinator:
Kelsey.McGuire@cityofchicago.org
 - Annie Chacko, Regional Nutrition Coordinator
Annie.Chacko@cityofchicago.org
- Family Connects Chicago: Jessica Wilkerson, Director of Program Operations
 - Jessica.Wilkerson@cityofchicago.org
- Lead Poisoning Prevention and Healthy Homes: Sharita Webb, Director of Program Operations:
Sharita.Webb@cityofchicago.org
 - **312-747-LEAD (5323)**
- Madeline Shea, Assistant Commissioner
 - Madeline.shea@cityofchicago.org
- MICAH Bureau website, Onechifam.org:
<https://www.chicago.gov/city/en/sites/onechifam/home.html>

Mathematica

ECRC Executive Committee

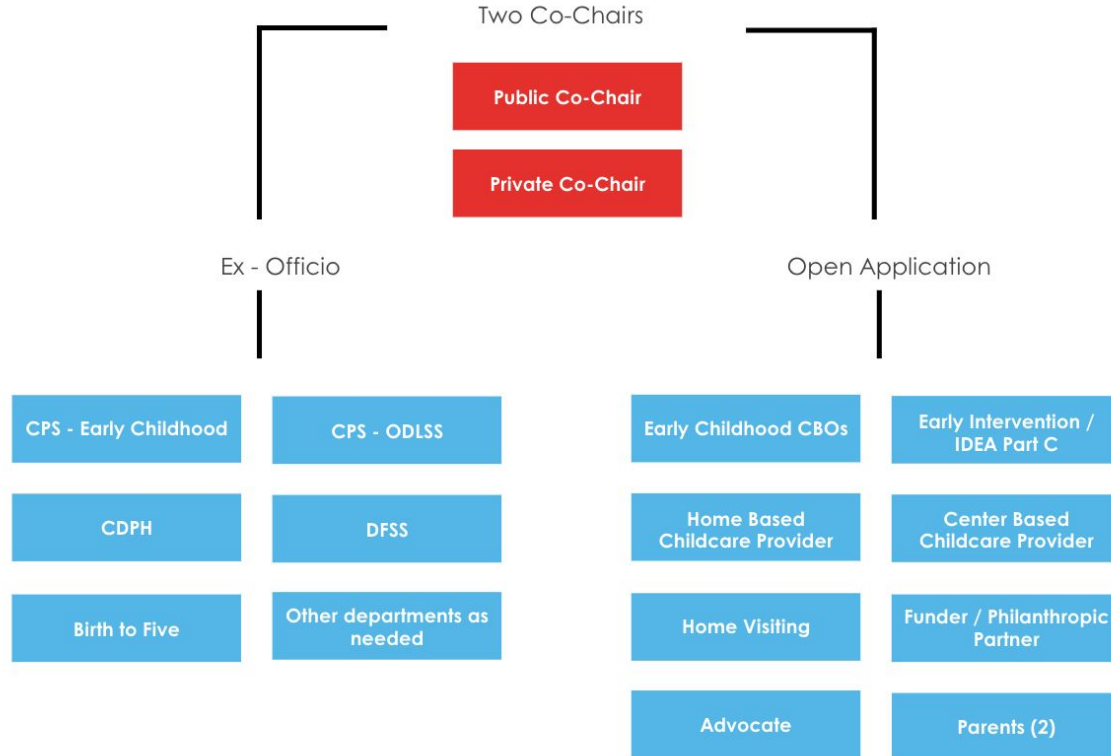
Executive Committee Members are responsible for stewarding the work of Every Child Ready Chicago (ECRC) forward.

The Executive Committee exists to provide strategic leadership and direction to ensure the sustainability of the ECRC Advisory Council and that it is meeting its purpose and role.





ECRC Executive Committee Structure





Eligibility Criteria

To be eligible to participate in the ECRC Executive Committee, one must:

- Have previous experience with ECRC or other early childhood related collective impact initiatives
- Live or work within the city of Chicago
- Knowledge of and/or experience with Chicago's early childhood programs and services





Member Responsibilities



Key responsibilities of the ECRC Executive Committee members are:

- Serve up to two renewable one year terms (average of 5-7 hours a month)
- Participate in community events and functions held or planned by the committee
- Regular attendance at all ECRC and Executive Committee's scheduled meetings
- Participate in succession planning activities



Selection Process

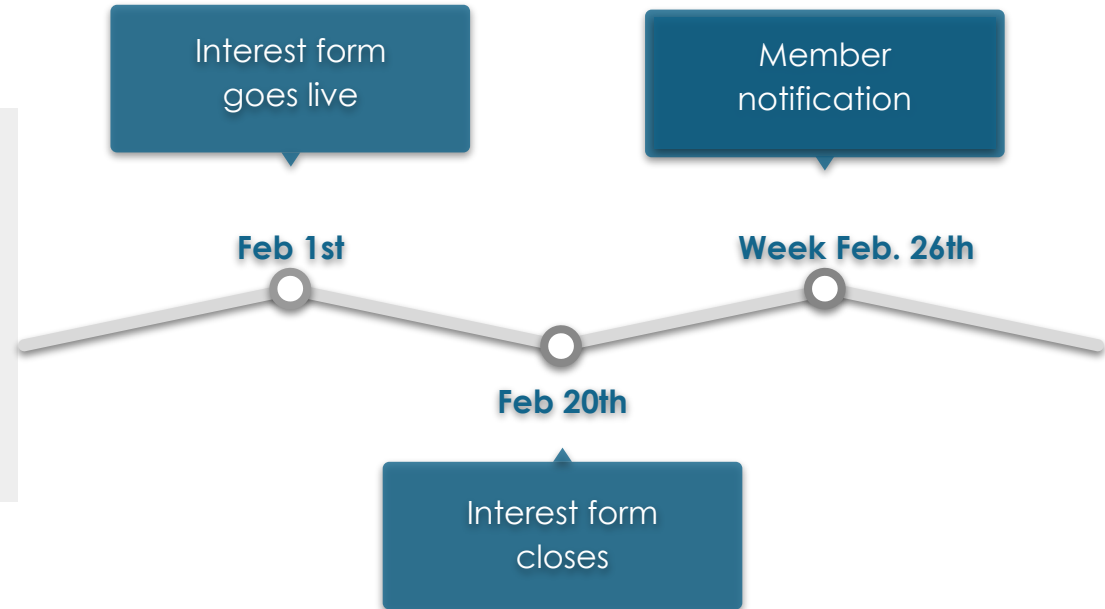
1. Submit interest form
2. If there are more applicants than available seats:
 - a. Co-chairs will make executive decision on who is selected **OR**
 - b. Create a “selection committee” of volunteers to rate applicants via rubric to identify final members



ECRC Executive Committee Current Openings & Timeline

Current Open Seats:

- 2 CBO's
- 1 Early/Head Start Recipient
- 1 Philanthropic Partner





Next Steps

1. Fill out the interest form for the Executive Committee if you are interested
2. Next ECRC Advisory Council meeting will be in **March 19, 2024**, a meeting invitation will be shared soon.

Thank you for joining

Every Child Ready Chicago Advisory Committee Meeting.