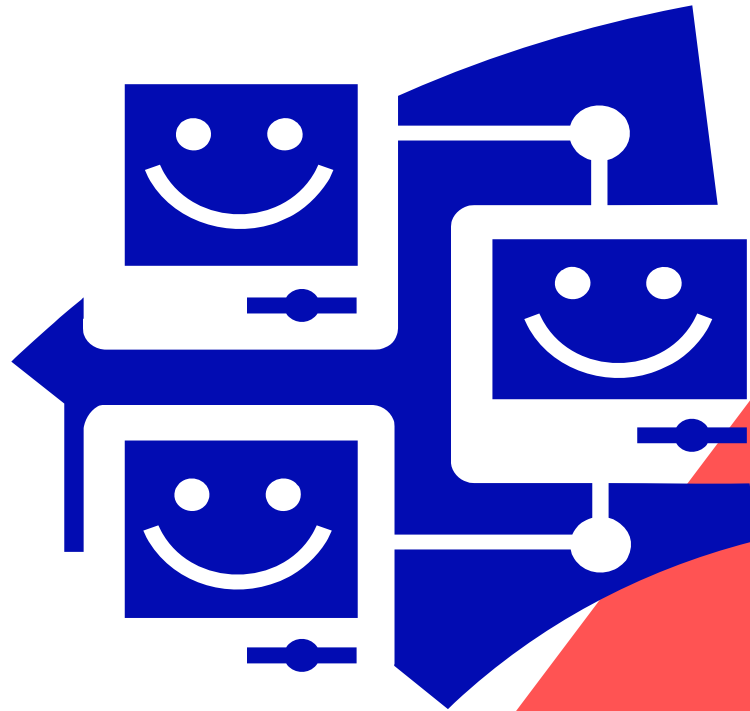


Minimum Hardware, Software, and Network Standards

*September 2007
Update*



Information & Technology Services



Chicago Public Schools

Table of Contents

September 2007 Update Overview	1
Purpose	1
Standards Update	1
Links	1
Minimum Standards versus Recommendations	2
IMPACT Recommended Standards	2
Instructional and Administrative Computers	3
Wintel Standards	3
Apple Workstations	4
Existing Network Servers	5
Existing Apple Servers	6

September 2007 Update Overview

Purpose

The Chicago Public Schools' (CPS) *Minimum Hardware, Software and Network Standards* sets forth the details of the Workstation and Network Policy for schools, regions, local school councils, and Central Office departments. The standards published in this document apply to all computers in CPS.

Any unit or school that connects machines to CPS' Wide Area Network (WAN) can affect connectivity at all other schools and units; therefore, everyone is responsible for network management and security. As such, the hardware, software, and network standards are established for **all** users.

All new purchases must be from pre-qualified vendors named on the Strategic Sourcing web page at: <http://www.csc.cps.k12.il.us/purchasing/index.php@tab=3&id=52.htm>. Contact the Office of Procurement and Contracts at (773) 553-2280 for more information.

To lease new equipment through the TECH|XL program, see the TECH|XL web page at: <http://www.ots.cps.k12.il.us/partnerships/techxl.shtml>.

Note: This document will be updated periodically as technology changes to support an environment that facilitates integration into the curriculum.

Standards Update

The hardware and software standards documented here represent the requirements for computer software and hardware configurations that will function properly and be supported within the CPS environment. Factors that influence these standards include, but are not limited to: the WAN design; the integration of technology and instruction; proper function of CPS business critical applications, computer maintenance and field support; Internet connectivity; industry benchmarks; security; asset management; and life-cycle management.

ITS requires that all devices comply with configuration management standards in regard to remote manageability (by having SMS installed), virus protection (by having Trend or Virex installed), and adherence to CPS naming convention. For more information on network compliance requirements, see the Network Management Guidelines at http://intranet.cps.k12.il.us/Technology/Network_Management_Guidelines.pdf.

Additional standards will be developed as needed to support CPS' computing infrastructure, e.g., WANs, Local Area Networks (LANs), hardware, and software.

Links

The most current version of the Minimum Hardware, Software, and Network Standards document is available online at http://www.cps.k12.il.us/Network_Standards.pdf.

More detailed information is available in the Network Management Guidelines at http://intranet.cps.k12.il.us/Technology/Network_Management_Guidelines.pdf.

Minimum Standards versus Recommendations

The minimum standards listed in this document represent the **MINIMUM** system configurations that may be used within the CPS environment. The charts in this document cover currently existing equipment, used equipment that may be purchased in the future, and donated equipment. This equipment should meet or exceed the “Minimum” configuration shown here. Please be aware that the minimum standards are for computer systems that are capable of running basic software only. A computer that only meets minimum standards will not function robustly in our enterprise network.

IMPACT Recommended Standards

The minimum standards and recommended standards in this document meet or exceed the minimum standards required to run the IMPACT applications.

For detailed information on IMPACT hardware requirements, see the IMPACT Preparation Booklet accessible at <http://impact.cps.k12.il.us/downloads/PrepBooklet2005.pdf>.

Instructional and Administrative Computers

Since CPS supports both **Wintel** and **Apple**, both platforms are addressed. Because the installed base of workstations is represented almost entirely by Windows PCs and Macintosh platforms, these guidelines deal exclusively with these. Platform choice is a local option except for Administrative workstations, and issues of a platform's viability are not addressed in these guidelines.

Wintel Standards

Existing, Used and Donated Workstation Configurations for the Network			
		Minimum	Recommended
Hardware	Processor	1.4 GHz	Current Tech XL Offering
	Memory (RAM)	256 MB	Current Tech XL Offering
	Hard Disk	20 GB	Current Tech XL Offering
	Free Hard Drive Device Space	20% of total hard drive space should be "free"	20% of total hard drive space should be "free"
	Audio Capabilities	n/a	Yes
	Optical Drive	DVD ROM	Current Tech XL Offering
	Operating System		Windows XP Professional Service Pack (SP) 2
Software	Browser	Internet Explorer (IE) 6 SP 2	Current Tech XL Offering
	Lockdown Software *	DeepFreeze Enterprise Edition 5.6	Current Tech XL Offering
Configuration	Anti-virus *	Trend Micro OfficeScan 8	Current Tech XL Offering
	Network Management Tool *	SMS 2003 SP1	Current Tech XL Offering
Network Connection		10/100	Current Tech XL Offering
Wireless		Cisco Aironet 802.11g any Cisco CCX 2.0 compatible card with 128 bit WEP recommended	Current Tech XL Offering

* Licenses for these software packages have been purchased by ITS and are provided at no additional cost. For information go to <http://its.cps.k12.il.us>.

Apple Workstations

For any Apple computer equipment to run the IMPACT applications, IE 5.x is required.

Macintosh Computer Configuration Minimums and Recommendations			
		Minimum	Recommended
Hardware	Base System	G3	Current Tech XL Offering
	Processor	500 MHz	Current Tech XL Offering
	Memory (RAM)	256 MB	Current Tech XL Offering
	Hard Disk	20 GB	Current Tech XL Offering
	Free Hard Drive Space	20% of total hard drive space should be "free"	20% of total hard drive space should be "free"
	Monitor/Video	n/a	n/a
	Optical Drive	Combo Drive/Super Drive 48x CD-ROM/8x DVD	Current Tech XL Offering
	Operating System		Mac OSX 10.4.8 or higher
Software	Browser	Safari v1.x	Current Tech XL Offering
	Lockdown Software *	DeepFreeze OSX	DeepFreeze OSX
Configuration	Anti-virus **	McAfee Viresscan 8.5 for OS X	McAfee Viresscan 8.5 for OS X
	Network Management Tool *	Net Octopus 5.1.1 and Timbuktu 6.x	Current Tech XL Offering
Network Connection		10/100 (or higher)	Current Tech XL Offering
Wireless		Apple (Airport Xtreme) 802 11 G 128 bit WEP Encryption	Current Tech XL Offering

* DeepFreeze OSX lockdown software is now available at a significant discount through CDWG.

** Anti-virus software listed here is provided by ITS.

Existing Network Servers

Servers should be sized according to their function and purpose. Check the minimum requirements of the software to be installed to determine actual minimums provided they meet or exceed the configurations listed below.

Existing Network Server Configuration Minimums and Recommendations			
		Minimum	Recommended
Hardware	Processor	1.4 GHz	Current Tech XL Offering
	Cache	128 KB	Current Tech XL Offering
	Memory	512 MB	Current Tech XL Offering
	Drive Controller	n/a	Current Tech XL Offering
	Hard Disk Type	IDE	Current Tech XL Offering
	Free Hard Device Space	20% of total hard drive space should be "free"	20% of total hard drive space should be "free"
	Tape Backup Device	n/a	Yes
	Optical Drive	Yes	Yes
	Anti-virus Software *	Trend Micro OfficeScan 8	Current Tech XL Offering
	Network Management Tool *	SMS 2003 SP1	Current Tech XL Offering
Network Connection		10/100	Current Tech XL Offering
Operating System		2000 SP 4	Current Tech XL Offering

* Anti-virus software and SMS client are provided by ITS.

Existing Apple Servers

Existing Apple Server Configuration Minimums and Recommendations			
		Minimum	Recommended
Hardware	Processor	1 GHz	Current Tech XL Offering
	Cache	n/a	Current Tech XL Offering
	Memory	1 GB	Current Tech XL Offering
	Drive Controller	n/a	Current Tech XL Offering
	Hard Disk Type	IDE	Current Tech XL Offering
	Free Hard Device Space	20% of total hard drive space should be "free"	20% of total hard drive space should be "free"
	Tape Backup Device	n/a	Yes
	Optical Drive	Yes	Yes
	Anti-virus Software *	McAfee Viresscan 8.5 for OS X	Current Tech XL Offering
	Network Management Tool *	Net Octopus 5.1.1 and Timbuktu 6.x	Current Tech XL Offering
	Network Connection		10/100
Operating System			Current Tech XL Offering

* Anti-virus software listed here is provided by ITS.